



36-CH NETWORK NAV RECORDING SYSTEM

Instruction Manual

FCC Information

This equipment has been tested and found to comply with the limits for a **Class A** digital service, pursuant to Part 15 of the **FCC** rules. These limits are designed to provide reasonable protection against harmful interference in a residential installation. This equipment generates, uses and can radiate radio frequency energy and, if not installed and used in accordance with the instructions, may cause harmful interference to radio communications.

If this equipment does cause harmful interference to radio or television reception, which can be determined by turning the equipment off and on, the user is encouraged to try to correct the interference by one or more of the following measures:

- ◆ Reorient or relocate the receiving antenna.
- ◆ Increase the separation between the device and the receiver.
- ◆ Connect the device into an outlet on a circuit different from that to which the receiver is connected.
- ◆ Consult the dealer or an experienced radio technician for help.

Note: All connections to other computing devices must be made using shielded cables to maintain compliance with FCC regulations. We recommend using a Dual-Link cable for DVI output.

Note: Only peripherals (input/output devices, terminals, printers, etc.) certified to comply with the **Class A** limits may be attached to this equipment. Operation with non-certified peripherals is likely to result in interference to radio and TV reception.

Caution

- Do not drop or strike the equipment
- Do not install the equipment near naked flames or heat sources
- Do not expose this unit to rain, moisture, smoke or dusty environments
- Do not cover the opening of the unit with cloth or plastic or install this unit in a poorly-ventilated place. Allow 10 cm between this unit and its surroundings.
- Do not continue to operate the unit under abnormal conditions such as detection of smoke, strange smell, or malfunctioned screen whilst power is turned on.
- Do not touch the power connection with wet hands
- To avoid unnecessary magnetic interference, do not operate this unit near magnets, speaker system, etc.
- All connection cables must be grounded properly CAUTION

Features

- ONVIF Profile S, LILIN IP cameras, PTZ domes, and DVRs/NVRs are supported
- Up to 36 channels 1080P/3M/5M/8M network streaming and recording
- Support 3.5" HDD x 5
- Failover, video achieve, and SmartSearch support.
- Dual streamings decoding mode supported
- Dual monitors support, up to 36 channels video display
- Support 36 channels playback for remote or local
- Support for image archiving mechanisms
- Built-in dual port Gigabit Ethernet

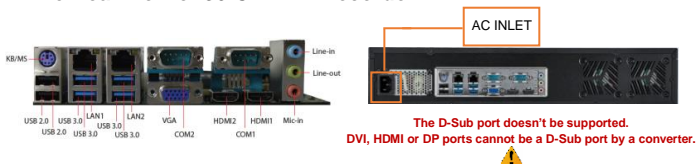


Product Overview

● The Front View of 36-CH NAV Recorder



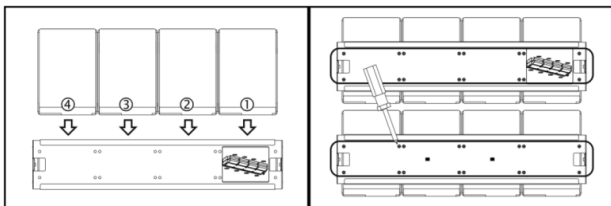
● The Real View of 36-CH NAV Recorder



Hard Drives Installation Instructions

3.5" HDDs Stallation

Remove the top case. Loosen the screws on both sides of the hard drive bracket. Install hard drives and tighten the hard drive screws as instructed below:



Screws loosened

Screws tightened

Connect SATA HDDs and power cables. Fix the HDDs on the HDD trays with screws. Fix the mounting brackets with screws. After above steps, fix the top cover with screws.

Rack Mount Installation

● Rack Mount Brackets Installation

Two rack mount brackets and 8 screws are included.



Tighten the screws for the brackets

See other reference manuals for detail.